

Let The Drop(N)Tell System Protect Your Fragile Product

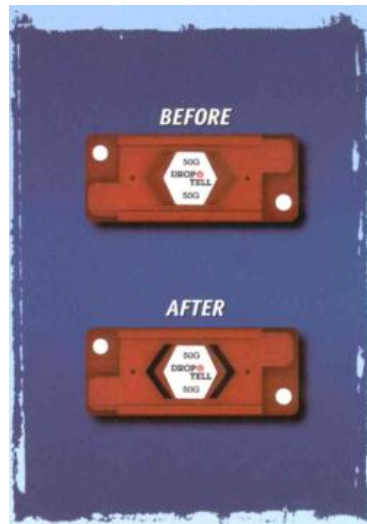


The DROP-N-TELL system includes two warning labels and is manufactured in six different Grades of 5G, 10G, 15G, 25G, 50G and 100G. The device monitoring 5 times the force of gravity is very force of gravity requires a greater impact to activate.

Attach the DROP-N-TELL to your product or shipping container by removing the liner on the back to expose the adhesive or screw/nail it using the holes in each end.

**RESETTABLE DROP-N-TELL 可复位 Drop(N)Tell**

The resettable DROP-N-TELL can be reset and reused up to 50 times. Simply bend the end of a paper clip and push it gently in the holes on each end of the indicator until the arrow shows red. Upon receiving an impact, the arrows will show blue.



**NON-RESETTABLE DROP-N-TELL**

This DROP-N-TELL can be used only once. It cannot be reset. Remove the bar across the arrows. Upon receiving an impact, the arrows will show blue.

**OPTIONAL FEATURES:**

A Large 8"×5" companion label pictured below is also available for a small additional charge.

**DO NOT DROP**  
切勿震动!!

**MONITORED SHIPMENT**

THIS CARTON CONTAINS A DROP (N) TELL IMPACT INDICATOR. A BLUE ARROW INDICATES IMPACT HAS EXCEEDED G LEVEL SHOWN IN CENTER OF INDICATOR. CHECK CONTENTS FOR DAMAGE IMMEDIATELY.

包装箱贴有 DROPO TELL 的防震动显示标签, 如果标签内箭头呈现蓝色, 表示该货物在运输中受到超过额定G值的震动影响, 请立即检查箱内货物。

专利号: 3,423,449  
PRINTED IN U.S.A.

PRMIERSE®  
WUXI Prmierse Technology Co., Ltd  
T:0086 510 81155720  
www.prmierse.com

**DROPO TELL**

**DO NOT DROP**

**MONITORED SHIPMENT**

THIS CARTON CONTAINS A DROP (N) TELL IMPACT INDICATOR. A BLUE ARROW INDICATES IMPACT HAS EXCEEDED G LEVEL SHOWN IN CENTER OF INDICATOR. CHECK CONTENTS FOR DAMAGE IMMEDIATELY.

PRINTED IN U.S.A.

**DROPO TELL**

PLACE ON BILL OF LADING  
贴于货物运输单处

DROPO TELL INDICATOR IN SHIPMENT.  
READ WARNING LABEL ON PACKAGE.  
被运输货物已贴有 DROPO TELL 震动显示标签, 收货时请检查该标签所呈状态。

**DROPO TELL**

PLACE ON BILL OF LADING  
DROP (N) TELL INDICATOR IN SHIPMENT.  
READ WARNING LABEL ON PACKAGE.

**DROPO TELL**

### DROP-N-TELL SPECIFICATIONS

Range: Standard DROP-N-TELL set points are 5,10,15,25,50and 100G's.

Indication: Blue arrow snaps into view in direction of shock.

Reference Shock: Design parameters were referenced to 1/2 sine wave shock pulse. See response curves below.

Sensitivity: Bi-directional , two opposite directions , two arrow displays.

Reset: Pin reset through access hole in each end (cannot be mistakenly reset).

Life: In excess of 50 cycles of switch and reset.

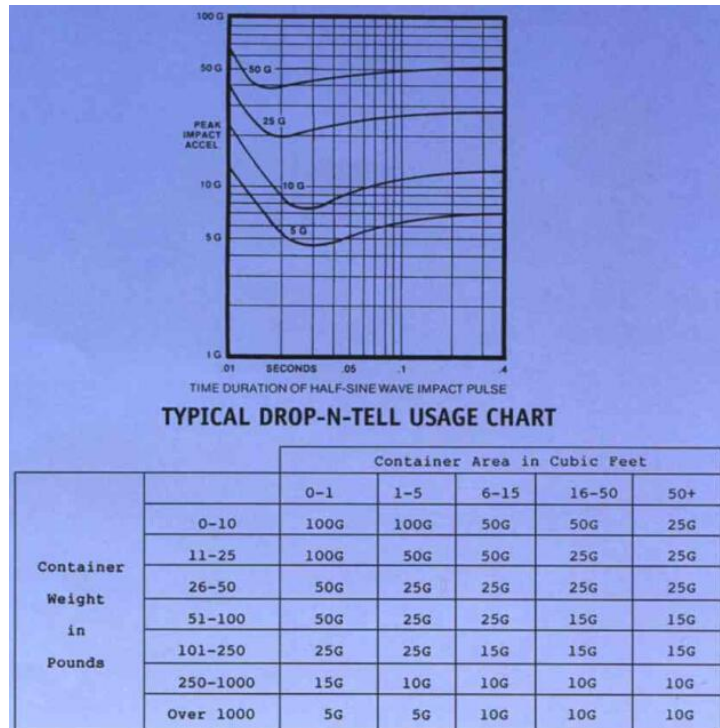
Accuracy: Within +/-20% of the calibration curves of figure below.

container weight in pounds (Lbs)	0~1cubic feet	1~5cubic feet	6~15cubic feet	16~50cubic feet	>50cubic feet
0-10	100G	100G	50G	50G	25G
11-25	100G	50G	50G	25G	25G
26-50	50G	25G	25G	25G	25G
51-100	50G	25G	25G	15G	15G
101-250	25G	25G	15G	15G	15G
250-1000	15G	10G	10G	10G	10G
1000+	5G	5G	10G	10G	10G

1 英磅 (Lbs) =0.4536KG

1 立方英尺 (cubic feet) =0.028 立方米

container weight in pounds(KG)	0.028 m <sup>3</sup>	0.028~0.14m <sup>3</sup>	0.168~0.42m <sup>3</sup>	0.048~1.4m <sup>3</sup>	>1.4m <sup>3</sup>
0-4.54	100G	100G	50G	50G	25G
5-12	100G	50G	50G	25G	25G
12-25	50G	25G	25G	25G	25G
25-50	50G	25G	25G	15G	15G
50-120	25G	25G	15G	15G	15G
120-450	15G	10G	10G	10G	10G
500+	5G	5G	10G	10G	10G



Time duration of half-sine wave impact pulse

TYPICAL DROP-N-TELL USAGE CHART

The chart shown above should be used only as a basic guide. DROP-N-TELL activation depends upon the type and amount of cushioning used to protect a product in transit . Drop height will also affect activation.

Formula For Calculating Cubic Feet

Length × width × depth(inches)